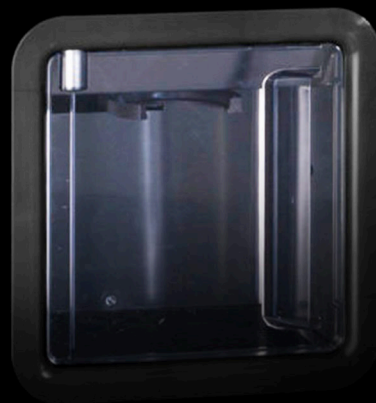
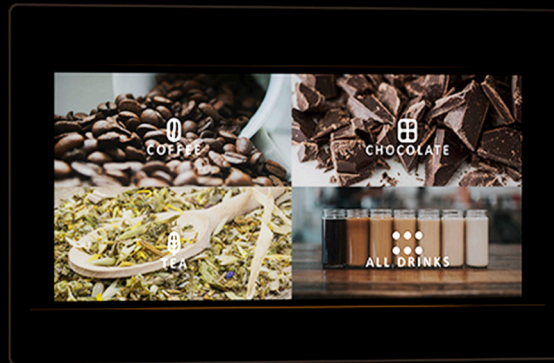


# Azkoyen



# Zensia

An automatic barista

# That`s Zensia

01



## Coffee Quality

From the highest quality hot drinks made with espresso coffee to delicious chocolates, teas, or drinks with vanilla and other flavors.

02



## Boost your sales

Zensia offers beverage customization to suit consumer taste as well as the option of a double bean hopper, allowing you to serve two types of coffee and win over more consumer profiles.

03



## A unique experience

Thanks to its intuitive interface, the purchase process is quick, smooth, and easy to use for any consumer. For the operator, its simplified programming system allows recipes to be customized and prices adjusted in seconds.

04



## Technology that solves

Smart sensors that prevent unintentional dispensing, reduce the risk of spills, guarantee quality in every cup, and notify when maintenance is needed.

05



## Minimalist Design

Its minimalist, ergonomic, and intuitive design, made with high-resistance materials, is especially effective in public vending locations where aesthetics and security are key factors.



## M03 grinder precisión

The **M03 high-performance grinder** is designed for any professional environment, with a performance and durability that guarantees a perfect coffee grind for all types of consumption. The time dosing system allows the coffee grind to be adjusted according to the desired coffee dose per cup. The manual grinder adjustment is very simple and allows for a high quality beverage that perfectly suits the customer's taste.



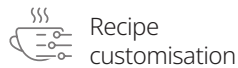
Equipped with **64 mm flat burrs** that allow for quick grinding and prevent a temperature rise that could damage the coffee. The grinder also incorporates a series of sensors that detect jams and product depletion, further enhancing its proven reliability and durability.

## Intuitive and interactive screen

An optional interactive screen designed to make maintenance tasks easy and efficient for any operator.

Its simple programming system helps you to customise recipes or prices very easily.

Interface maximises user experience, guiding the user through the purchase process with ease.



Recipe customisation



Sales Data Analysis



Quick and easy configuration panel



Allergen information



## Brewing units

To deliver a perfect espresso, all brewing groups extract the maximum flavor and aroma from freshly ground coffee, with ideal creaminess at an exact pressure of 9 bars. Depending on requirements, the machine can be equipped with the AZK V10 or AZK V20 fixed-volume group.

For smaller-volume drinks, the V10 is recommended, while the V20 is ideal for higher-volume offerings, thus adapting solutions to your customers' preferences and demands.

## Double bean machines

Double the offer to multiply personalization.

With two independent grinders, Zensia Double Bean can prepare different recipes and beverages, satisfying all customer tastes with a single machine in one place boosting both consumption and the machine's profitability.



## General characteristics

	Brewing method	Weight	Chamber diameter	Piston
<b>AZK V10</b>	Espresso	6-8 g	38 mm	Fixed position
<b>AZK V20</b>	Espresso	12-14 g	48 mm	Fixed position

# Zensia

Barista quality,  
automatic experience



The Zensia range brings together design, technology, and flavor in every cup. Its elegant aesthetics are paired with a professional coffee extraction system that guarantees consistent quality. With an intuitive, versatile, and visually appealing interface, Zensia transforms every coffee break into a moment of genuine enjoyment.

	Zensia 6 Espresso	Zensia 7 Espresso	Zensia 8 Espresso	Zensia 7 Doble Espresso	Zensia 8 Doble Espresso	Zensia 6 Instant
--	----------------------	----------------------	----------------------	----------------------------	----------------------------	---------------------

## Capacity

No. of Hoppers	1 coffee + 5 solubles	1 coffee + 6 solubles	1 coffee + 7 solubles	2 coffee + 5 solubles	2 coffee + 6 solubles	6 solubles
Stirrer	90 mm	90 mm	90 mm	90 mm	90 mm	-
Coffee Hopper (kg)	4,3	4,3	4,3	4,3+2,4	4,3+2,4	
Instant Coffee (L)	-	6	(2x) 4,6	6	(2x) 4,6	6
Decaf (L)	4	6	3	-	-	6
Milk Powder (L)	12	6	5	6	5	12
Chocolate (L)	8	6	4,6	6	4,6	6
Tea (L)	6	6	3	6	3	6
Sugar (L)	4	4	4	4	4	6
N° mixers	3	4	4	3	3	4
N° of Cups	700	700	700	700	700	700

## Boiler and dispensing unit

Pressure Boiler (315ml)	<b>S</b>	<b>S</b>	<b>S</b>	<b>S</b>	<b>S</b>	-
Pressure Boiler (700ml)	<b>O</b>	<b>O</b>	<b>O</b>	<b>O</b>	<b>O</b>	-
Atmospheric boiler (3000ml)	-	-	-	-	-	<b>S</b>
AZK V10 / 6-8 g fixed volume	<b>S</b>	<b>S</b>	<b>S</b>	<b>S</b>	<b>S</b>	<b>S</b>
Azk V20 / 12-14g fixed volume	<b>O</b>	<b>O</b>	<b>O</b>	<b>O</b>	<b>O</b>	<b>O</b>
N° of Cups 70 mm	700	700	700	700	700	700
Grinder	M03	M03	M03	2 x M03	2 x M03	-

## User Interface

Illuminated cup station	<b>O</b>	<b>O</b>	<b>O</b>	<b>O</b>	<b>O</b>	<b>O</b>
Cup sensor	<b>O</b>	<b>O</b>	<b>O</b>	<b>O</b>	<b>O</b>	<b>O</b>

## Display

### Option 1: Capacitive Display

Number of selections	20	20	20	20	20	20
15,4" Media Screen	<b>O</b>	<b>O</b>	<b>O</b>	<b>O</b>	<b>O</b>	-

### Option 2: 15,6" Touch Display

Number of selections	unlimited	unlimited	unlimited	unlimited	unlimited	unlimited
Integrated connectivity*	<b>S</b>	<b>S</b>	<b>S</b>	<b>S</b>	<b>S</b>	<b>S</b>

## Payment systems

Coins	<b>S</b>	<b>S</b>	<b>S</b>	<b>S</b>	<b>S</b>	<b>S</b>
Bank notes	<b>O</b>	<b>O</b>	<b>O</b>	<b>O</b>	<b>O</b>	<b>O</b>
Cashless	<b>O</b>	<b>O</b>	<b>O</b>	<b>O</b>	<b>O</b>	<b>O</b>

## Technical specifications

Voltage (V)	230	230	230	230	230	230
Max Power (W)	1800	1800	1800	1800	1800	2100
Height (mm)	1830	1830	1830	1830	1830	1830
Width (mm)	600	600	600	600	600	600
Depth (mm)	625	625	625	625	625	625

\* Requires separate activation; additional fees may apply.

# Azkoyen

## Simply exquisite

**Spain**

Avda. San Silvestre, s/n  
31350 Peralta (Navarra)  
Tel: 948 709 709  
[www.azkoyenvending.es](http://www.azkoyenvending.es)

**U.K.**

Unit 1, Interplex 16,  
Ash Ridge Road  
Bradley Stoke, Bristol,  
BS32 4QE, England  
Tel: 01275 844 471  
[www.coffetek.co.uk](http://www.coffetek.co.uk)

**Germany**

Am Turm 86  
53721 Siegburg  
Tel: 02241-595 70  
[www.azkoyenvending.de](http://www.azkoyenvending.de)

**France**

6 Allée de Londres  
Le Madras Bat. C2  
91140 Villejust  
Tel: 01 69 75 42 10  
[www.azkoyenvending.fr](http://www.azkoyenvending.fr)

**Portugal**

Bela Vista Office  
Estrada de Paço  
de Arcos, 66  
2735-336 Cacem  
Tel: 1210 985 212

**Colombia**

Vía la Virginia,  
Corregimiento  
Caimalito. Bodega B-16.  
Zona Franca Internacional  
de Pereira  
Tel: +57 6 31 105 13  
[www.azkoyenandina.com](http://www.azkoyenandina.com)

**United States**

3809 Beam road, Suite H  
Charlotte, NC 28217  
Tel: +1 (980) 237-5065  
[www.azkoyenvendingusa.com](http://www.azkoyenvendingusa.com)

Coffee & Vending Systems Division



Azkoyen



ascaso

84800061 2003